

BEAUTIFIL II **VS**

A Low Shrink Direct Restorative



Minimally Invasive
Cosmetic Dentistry





Breakthrough Technology

Formulated with groundbreaking SRS monomer technology, **BEAUTIFIL II LS** is a true innovation in direct resin restoration.

BEAUTIFIL II LS exhibits extremely low polymerization shrinkage and related stress while maintaining superior aesthetics, remarkable abrasion resistance, easy handling, lasting natural lustre & durability, along with its anti-plaque benefits and sustained fluoride protection for universal application.

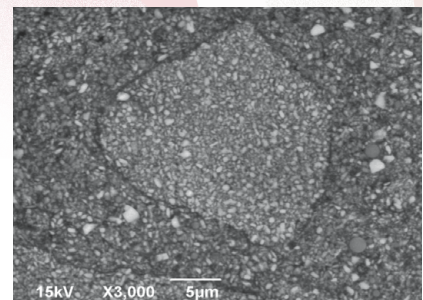
SRS Technology

The novel **SRS (Steric Repulsion Structured)** molecule is designed to minimize polymerization shrinkage through molecular steric repulsion resulting in a sturdy and stable restoration microstructure. It also exhibits high refractive index which matches that of the radiopaque fillers to optimize light translucency.

Unique Pre-polymerized Filler Complex

Multifunctional organic inorganic composite filler complex with unique proprietary silanol resin formulation that imparts remarkable mechanical properties, higher wear resistance, exceptional & lasting polish.

*Pre-polymerized
Filler Complex*



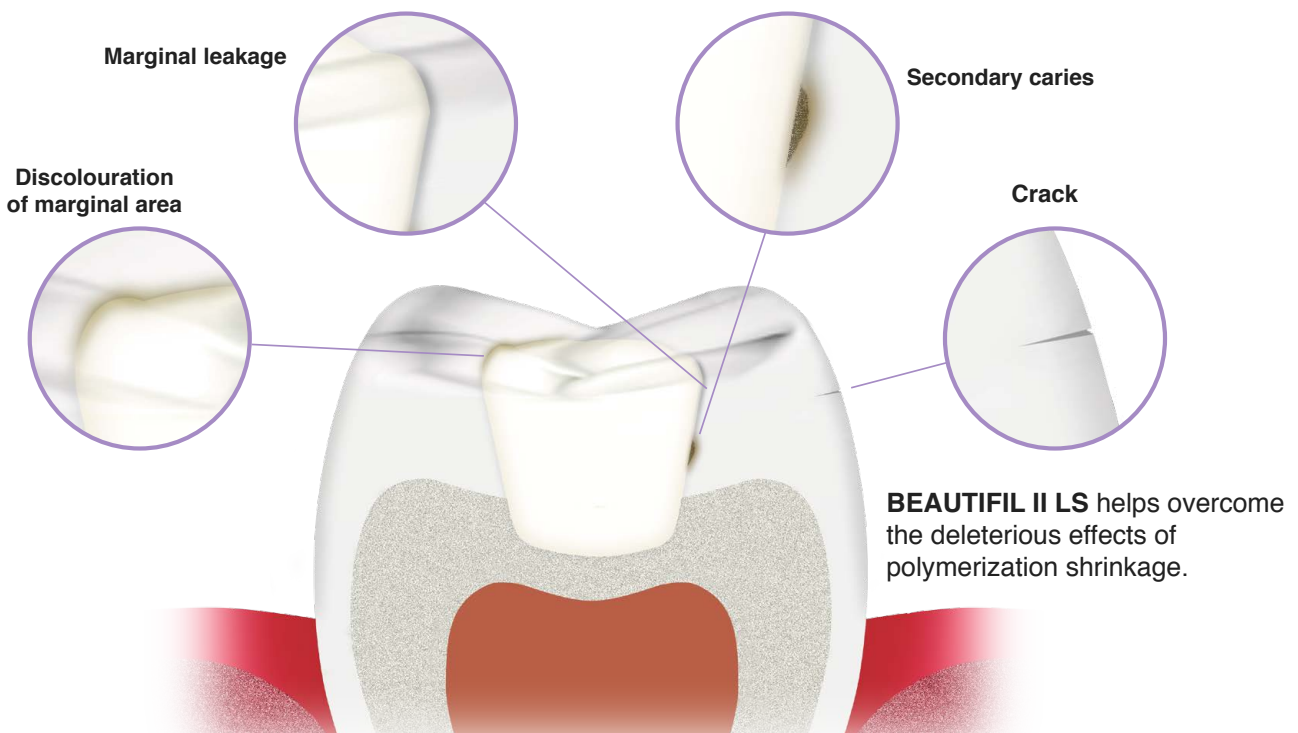
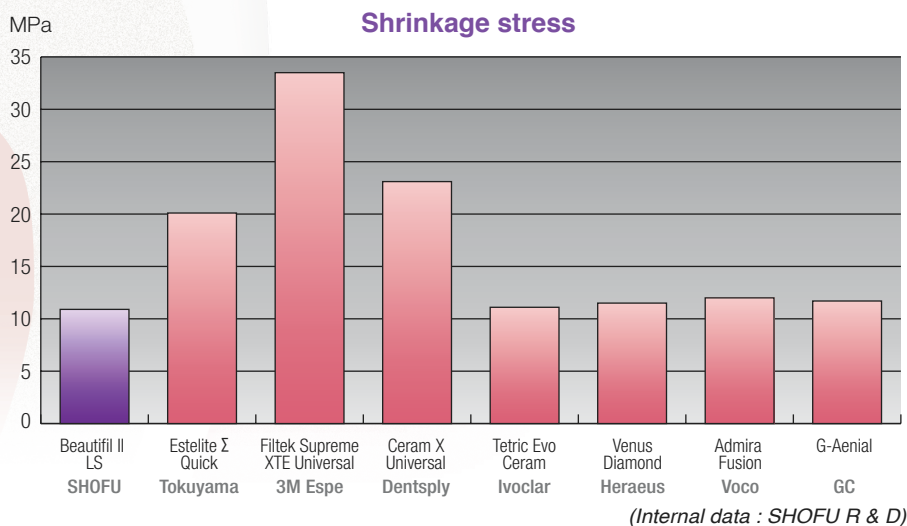
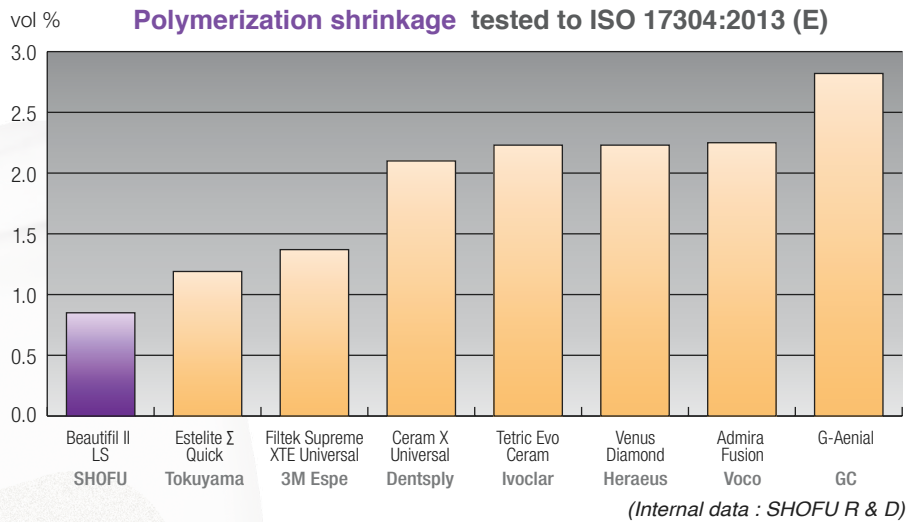
Benefits

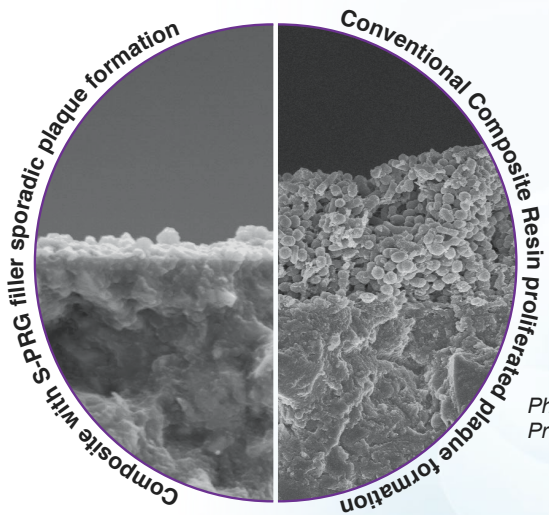
- *Life-like Aesthetics with easy shade match*
- *Low volumetric shrinkage of less than 1% and low resultant shrinkage stress*
- *Effortless polish to a lasting natural luster*
- *Remarkable stain and wear resistance*
- *Optimal physical properties and clinical durability*
- *Excellent handling qualities & sculptability with long working time*
- *S-PRG Fillers provide anti-plaque benefits and continued fluoride protection*

REMARKABLE PHYSICAL PROPERTIES

Notably low shrinkage stress

BEAUTIFIL II LS filler architecture optimizes light diffusion and translucency to blend in to perfection with the patient's natural teeth shade. Natural teeth are easily simulated as dentin shades exhibit light diffusion as seen in natural dentin and the enamel shade are translucent like natural enamel.





BIOACTIVE BENEFITS

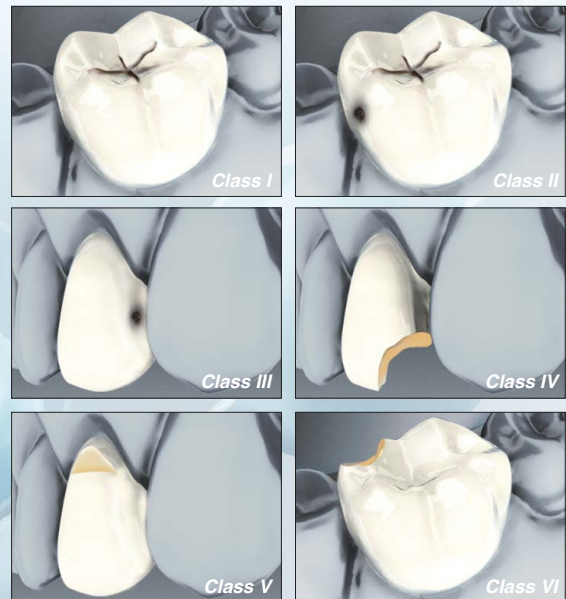
All round protection ...

Proprietary bioactive S-PRG Fillers incorporated in **BEAUTIFIL II LS** exhibit acid-neutralizing ability to maintain an acid neutral and fluoride rich environment. Research has shown that Giomer based restorative materials including **BEAUTIFIL II LS** have an anti-plaque effect on the restoration surface for long-term protection and to prevent potential gingival irritation.

Photographs courtesy of
Prof. Koji Yamamoto of the ASAHI University

Ideal for Restoration of

- 1) Class I through Class VI cavities
- 2) Modification of tooth shape, size & colour
- 3) Direct Cosmetic Veneers
- 4) Repair of direct and indirect prosthesis
- 5) Diastema Closure



Photographs courtesy of Dr. Sushil Koirala, BDS, AAAD.



Modification of tooth shape, size & colour



Direct Cosmetic Veneers



Repair of direct and indirect prosthesis



Diastema Closure

LIFE-LIKE AESTHETICS, UNPARALLELED RESULTS

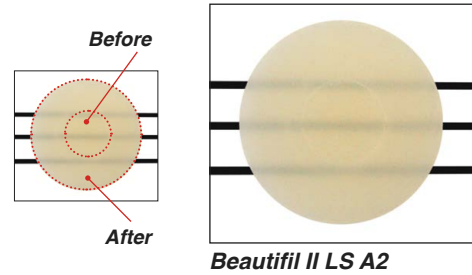
Naturally Vivid & Stable Shades

BEAUTIFIL II LS is formulated to simulate the optical nature of natural teeth by harmonizing light transmission and diffusion seen in dentin and enamel in any ambient light condition and even reflects natural fluorescence.

The refractive index of the special pre-polymerized and multifunctional fillers is optimized with the resin matrix to match light translucency, hue and brightness of natural teeth.

Exceptional Shade Stability

Less pre-and post-cure transition in shade and translucency



Photographs courtesy of Dr. Sushil Koirala, BDS, AAAD.



Photographs courtesy of Dr. Kozo Yoshino, Fukuishi Dental Clinic, Japan.

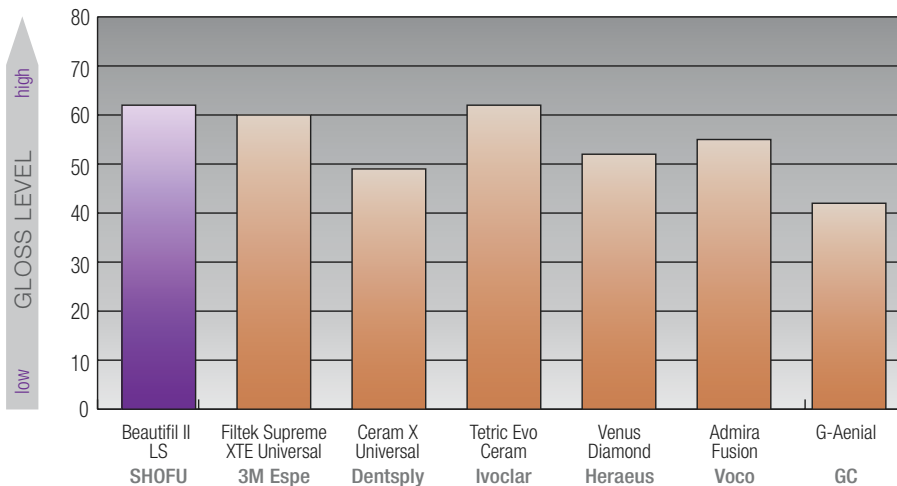


Photographs courtesy of Dr. Sven Rinke, Hanau, Germany.

Sustained Surface Luster

Uniform dispersion of filler complex in **BEAUTIFIL II LS** ensures ease of polishing to a high, lasting gloss within a short time.

Gloss (30 sec.) tested to ISO 2813:2014

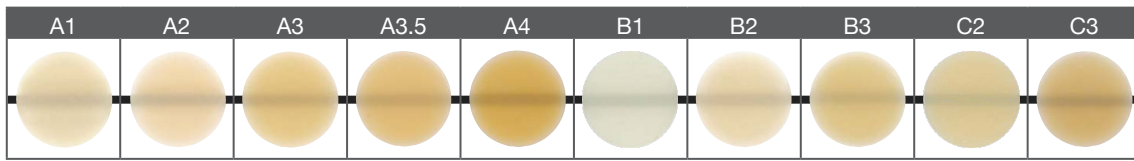


(Internal data : SHOFU R & D)

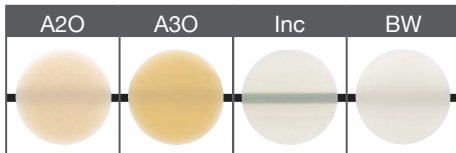
Simple & Logical Shade Spectrum

BEAUTIFIL II LS offers a practical shade line up that exhibits 3 levels of translucency to easily mimic the enamel as well as deep and superficial dentin layers of natural teeth.

BEAUTIFIL II LS

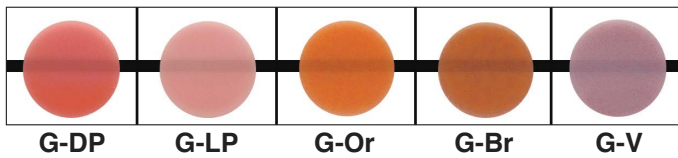


The shades A1-C3 correspond to the VITA* Classical Shades.

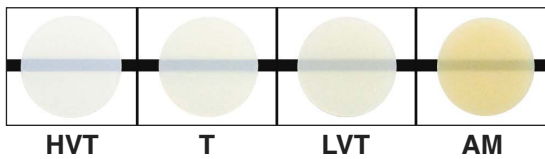


Complementary Line Up

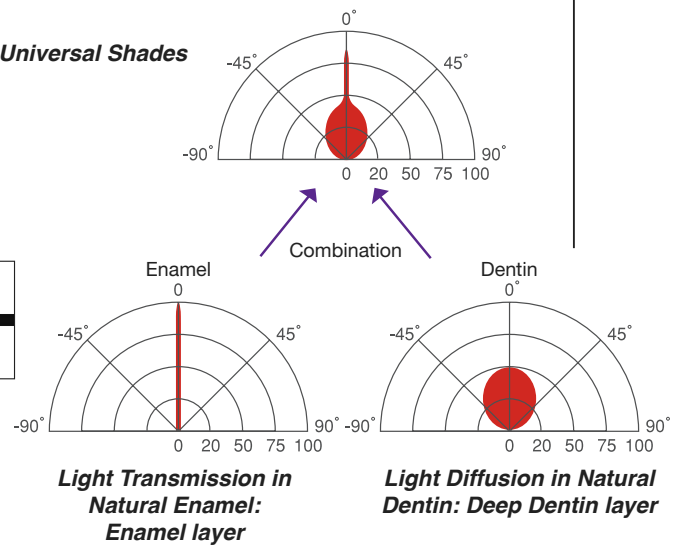
BEAUTIFIL II Gingiva



BEAUTIFIL II Enamel



Universal Shades










EXCEPTIONAL HANDLING & SCULPTABILITY

Easy & Simple to adapt

The balance of the multi-filler phase and innovative SRS monomer creates a non-tacky, moderately firm, sculptable paste that is easy to adapt, without any slump. High tolerance to ambient light facilitates longer working time to easily shape the restoration and recreate fine surface details.



Finishing & Polishing Aids

SEQUENCE	DISPOSABLE DEVICES		AUTOCLAVABLE DEVICES
	Disk based System (Anterior Resin Restoration)	Impregnated Finishers & Polishers	Impregnated Finishers & Polishers
CONTOURING/ FINISHING	Super-Snap Coarse (Black)/ Super-Snap Medium (Violet) 	OneGloss 	Dura-White Stones / T & F Hybrid points 
PRE-POLISHING/ POLISHING	Super-Snap X-Treme Fine (Green) / Super-Snap X-Treme Superfine (Red) 	OneGloss 	CompoMaster Coarse / CompoMaster 
HIGH-LUSTER POLISHING	SuperBuff / Super-Snap Buff & Direct Dia Paste 		



Order Information



BEAUTIFIL II LS Syringe 4g	
SHADE	PN
A1	Y2270
A2	Y2271
A3	Y2272
A3.5	Y2273
A4	Y2274
B1	Y2275
B2	Y2276
B3	Y2277
C2	Y2278
C3	Y2279
A2O (Opacious A2)	Y2280
A3O (Opacious A3)	Y2281
INC (Incisal)	Y2282
BW (Bleach White)	Y2283



BEAUTIFIL II LS Tips 0.25g x 20	
SHADE	PN
A1	Y2284
A2	Y2285
A3	Y2286
A3.5	Y2287
A4	Y2288
B1	Y2289
B2	Y2290
B3	Y2291
C2	Y2292
C3	Y2293
A2O (Opacious A2)	Y2294
A3O (Opacious A3)	Y2295
INC (Incisal)	Y2296
BW (Bleach White)	Y2297



BEAUTIFIL Injectable 2.2g	
SHADE	PN
SA0.5	2050
A1	2052
A2	2054
A3	2056
A3.5	2057
A4	2058
B1	2073
B2	2074
C2	2075
SA0.5O	2051
A1O (Opacious A1)	2053
A2O (Opacious A2)	2055
INC (Incisal)	2060
BW (Bleach White)	2059



BEAUTIFIL II Gingiva 2.5g	
SHADE	PN
G-LP	Y2256
G-DP	Y2257
G-V	Y2258
G-BR	Y2259
G-OR	Y2260



BEAUTIFIL II Enamel 2.5g	
SHADE	PN
T	Y2250
HVT	Y2251
LVT	Y2252
AM	Y2253



BEAUTIBOND Set [PN 1781]



FL-BOND II Complete Set [PN 1306]



SHOFU INC. 11 Kamitakamatsu-cho, Fukuine, Higashiyama-ku, Kyoto 605 - 0983, Japan (www.shofu.co.jp)
SHOFU DENTAL ASIA-PACIFIC PTE. LTD. 10 Science Park Road, #03-12 The Alpha, Science Park II, Singapore 117684 (www.shofu.com.sg)
SHOFU DENTAL TRADING (SHANGHAI) CO. LTD. 645 Jiye Road, Sheshan Industry Park Songjiang 201602, Shanghai, China (www.shofu.com.cn)
SHOFU DENTAL CORPORATION 1225 Stone Drive, San Marcos, CA 92078-4059, USA (www.shofu.com)
SHOFU DENTAL GmbH Am Brüll 17, POST BOX 1723 D-40837 Ratingen, Germany (www.shofu.de)
SHOFU UK. Riverside House, River Lawn Road, Tonbridge, Kent TN9 1EP, United Kingdom (www.shofu.co.uk)