

Your practice is *our* inspiration.®

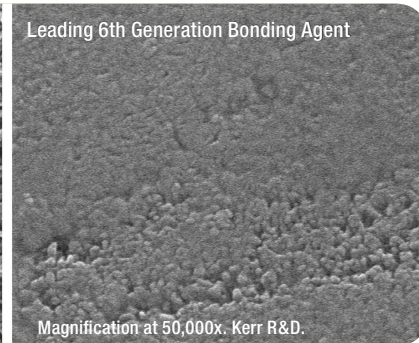
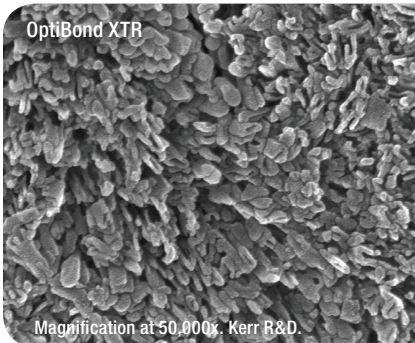
## OptiBond XTR | Unmatched power for all your restorations

**Outstanding bond strengths to dentin and enamel.** Extraordinary performance for long-lasting restorations, enhanced marginal integrity, and reduced microleakage.

**Self-etch.** Minimizes post-operative sensitivity, maximizes patient comfort.

**Direct and indirect restorations.** A true universal adhesive – eliminates the need for multiple bonding agents.

**Proven OptiBond™ Technology.** Dependable clinical performance and reliability.



Magnification at 50,000x. Kerr R&D.

Magnification at 50,000x. Kerr R&D.

# OptiBond XTR

Predictable. Reliable. *Extraordinary.*



OptiBond™ XTR stands apart as the only bonding agent that embodies both the power and durability of a total-etch adhesive and the simplified protocol of a self-etch technique. Universal compatibility enables use for all direct and indirect restorations. The unique chemistry of an enhanced self-etch primer and optimized adhesive in this 2-bottle system brings outstanding bond strengths to uncut enamel and dentin.

*Inspired by:*

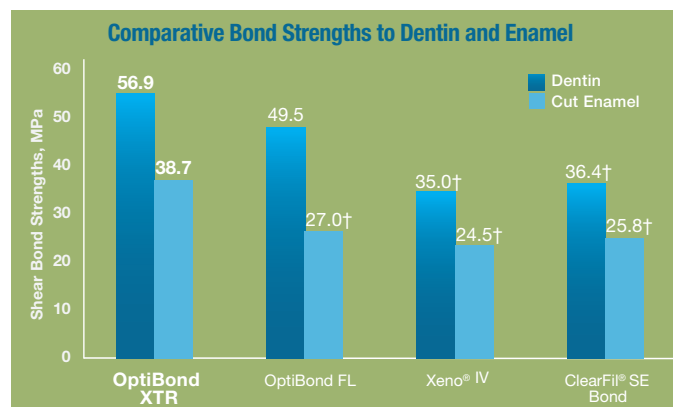
*Is it even possible—a self-etch adhesive with the strength of a total-etch? It is. And Kerr has made it happen.*

*— Dr. Marc Geissberger*

## Research

OptiBond XTR employs Kerr's well-proven GPDM technology, ternary solvent system, filled adhesive and optimized formulation to produce outstanding adhesion for direct and indirect procedures.

- Independent testing demonstrates statistically superior enamel and dentin bond strength.
- Enhanced primer provides superior self-etching power on enamel and exceptional penetration into dentin.
- Optimized adhesive offers efficient polymerization and increased hydrophobicity to boost mechanical strength, bond durability, and marginal integrity.

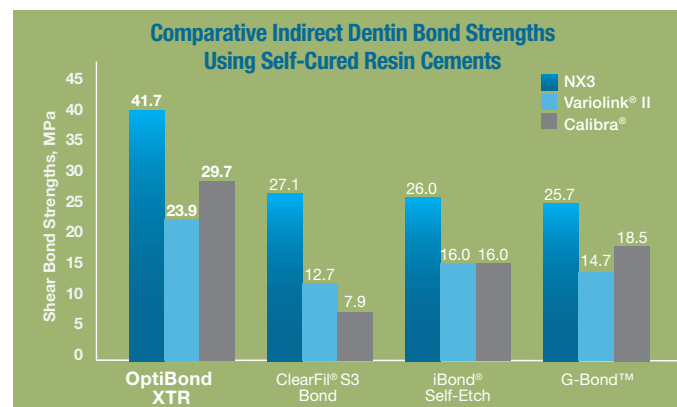


Study conducted by Dr. Carlos Munoz, University of Buffalo. Data available upon request.  
† Indicates statistically significant differences as compared to OptiBond XTR.

## Better than the competition

Attribute	OptiBond XTR	vs.	ClearFil SE Bond
Unidose® Packaging	Yes		No
Fluoride Release	Yes		No
Filler Load	15%		10%
Universal Use/Direct & Indirect	Yes		No
Bond Strengths to Uncut-Enamel*	31.8		20.3
Film Thickness	~5-10 microns		~35 microns

\*Testing conducted by Kerr R&D. Data available upon request.



24-hour testing conducted by Kerr R&D. Data available upon request.

## Ordering

### 35106B OptiBond XTR Bottle Intro Kit with Trial Kit

Intro Kit Contains: 1 Bottle Self-Etching Primer (5 ml), 1 Bottle Universal Adhesive (5 ml), 100 Applicators and 25 Four-Cavity Mixing Wells, Directions for Use and 1 Technique Guide

Trial Kit Contains: 5 Unidose Self-Etching Primers (0.18 ml each), 5 Unidose Universal Adhesives (0.18 ml each), Directions for Use and 1 Technique Guide

### 35105B OptiBond XTR Unidose® Intro Kit with Trial Kit

Intro Kit Contains: 50 Unidose Self-Etching Primers (0.18 ml each), 50 Unidose Universal Adhesives (0.18 ml each) 100 Applicators, Directions for Use and 1 Technique Guide

Trial Kit Contains: 5 Unidose Self-Etching Primers (0.18 ml each), 5 Unidose Universal Adhesives (0.18 ml each), Directions for Use and 1 Technique Guide

### Refills

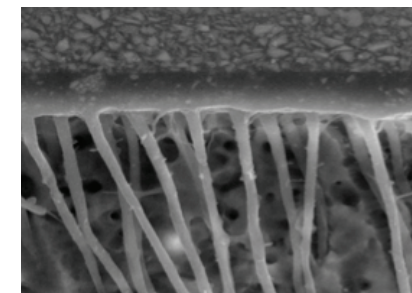
#### 35107 OptiBond XTR Bottle Primer

Self-Etching Primer (5 ml) and Directions for Use

#### 35108 OptiBond XTR Bottle Adhesive

Universal Adhesive (5 ml) and Directions for Use

**Amazing. No other word describes the incredible performance of OptiBond XTR.**



Clear, long resin tags with penetration into lateral dentin tubule branches (2,000x).

©2011 Kerr Corporation Lit No. 35220 Rev 0  
All trademarks are property of their respective owners.  
Printed in USA